

SealBoss® Case Study

Date of Completion: June 2011 - Present

Location: Christchurch Casino – Christchurch, New Zealand

Contractor: Canterbury Waterproofing Limited

Supplier: Equus Southern

Scope: In a 6 month period, the city of Christchurch, New Zealand experienced 2 major earthquakes. In September of 2010, a 7.1 magnitude earthquake caused severe structural damage to the city and surrounding areas. In February of 2011, Christchurch was hit with another earthquake, 6.3 in magnitude. One of very few buildings still set for repair was the Christchurch Casino in Central Christchurch. The structure was in need of a significant amount of structural crack repair throughout the parking structure and other structural elements.

Repair Method: Equus Southern submitted SealBoss® 4000LV and SealBoss® 4000 QuickSeal for the structural injection of these cracks. Through a process of low pressure chemical injection, Canterbury Waterproofing Limited successfully injected hundreds of structural cracks and structures throughout the casino. Through strict Quality Control guidelines of material volume documentation, the team was able to present quantitative injection results to engineers.



Figure 1. Measuring Crack Width

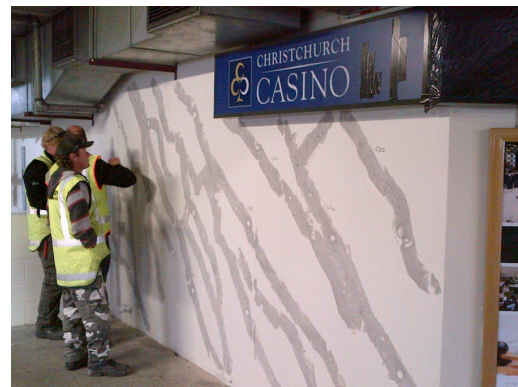


Figure 3. Wall crack prep work

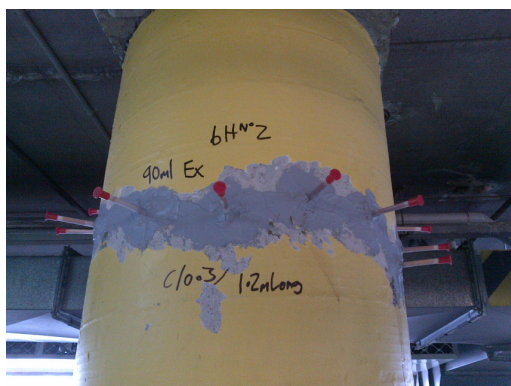


Figure 3. Quality Assurance Practices



Figure 4. Completed Beam